

PMI HAND PUMP WITH ALUMINIUM TANK

MAX PRESSURE: 280 BAR (4116 PSI) MAX

PRESSURE RANGE: 3.5 - 204 BAR (50-3000PSI)
SET BY CLIENT

RATED FLOW: 45CC / R

PORT SIZES: A,B = G1/4"

WORKING TEMPS: -40 / 80°C

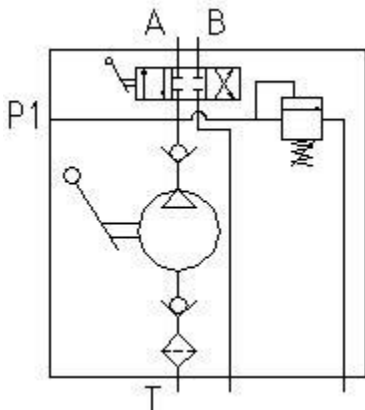


ORDERING CODES	DESCRIPTION	WEIGHT APROX. (DRY)	TANK CAPACITY
PMI45 S-Y-C	D/A HAND PUMP WITH LEVER AND RELIEF	4KGS	2LTR
HVPS2	2 LTR TANK ONLY	TBA	2LTR
HVPS5	5 LTR TANK ONLY	TBA	2LTR
PMI45_HANDLE	HANDLE ONLY	TBA	N/A

DESCRIPTION: A light weight yet durable hand pump unit. Fitted with a 4 way 3 position valve operated via a lever and a non adjustable relief valve. The pump pick up tube has a build in stainless steel strainer for added protection against possible oil contamination.

OPERATION: Turn the directional lever to wards ports A or B depending on the direction of the oil flow required and start pumping via the manual lever. To return oil to tank, simply turn the directional lever towards the other port and start pumping via the manual lever. The unit has a closed center position where oil should not pass in any direction. The fixed relief valve (if fitted) ensures the unit should not exceed 280bar if the unit dead heads.

NB: If using in conjunction with Aluminium manifolds or cartridges, a separate relief valve with a lower setting may be required.



NOTE: ENSURE THE UNIT IS USED BY TRAINED AND COMPETENT PERSONEL.



PMI HAND PUMP WITH ALUMINIUM TANK

